

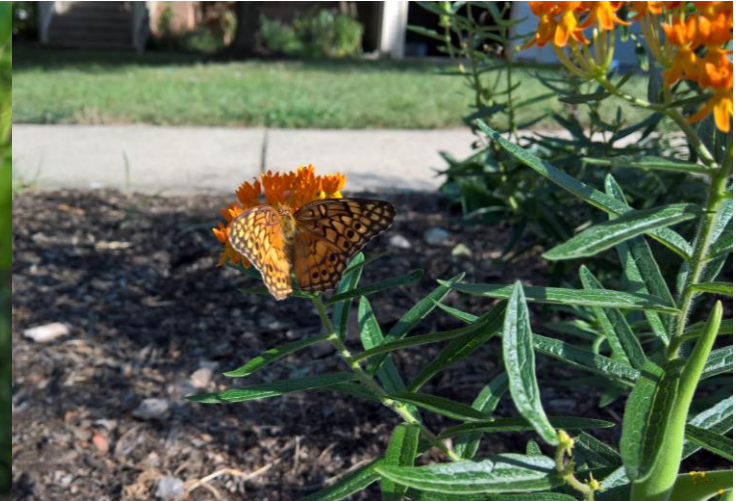


MELINDA SOLTYS

Northern Virginia

IF YOU
BUILD IT...

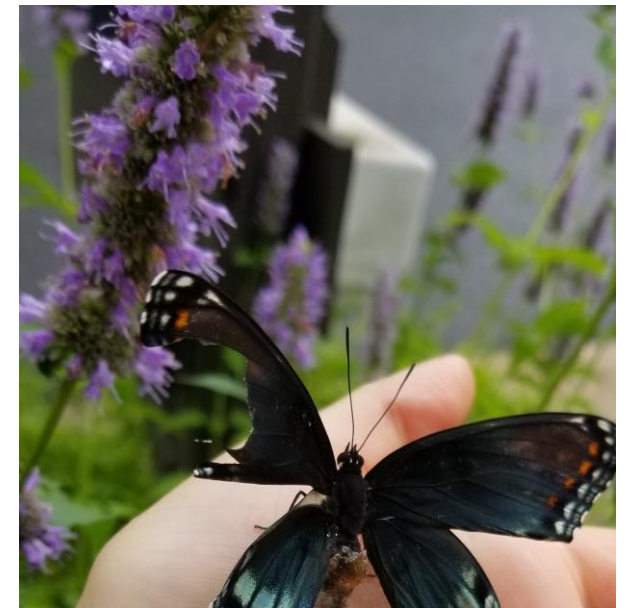
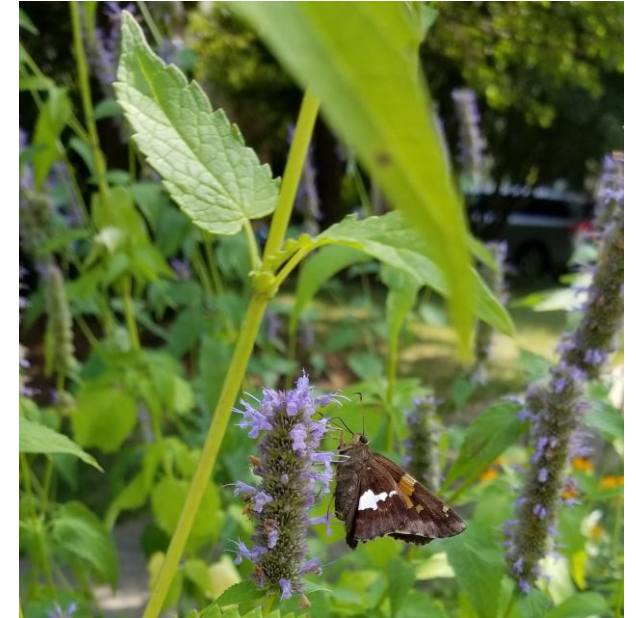
*“Every time I walk
by I’m excited to see
what’s blooming
now!”*



THEY WILL COME!

*“Your garden
provided magic for us
right on around the
corner”*

*“During Covid my
daughter’s class used
your garden as part
of their lesson”*



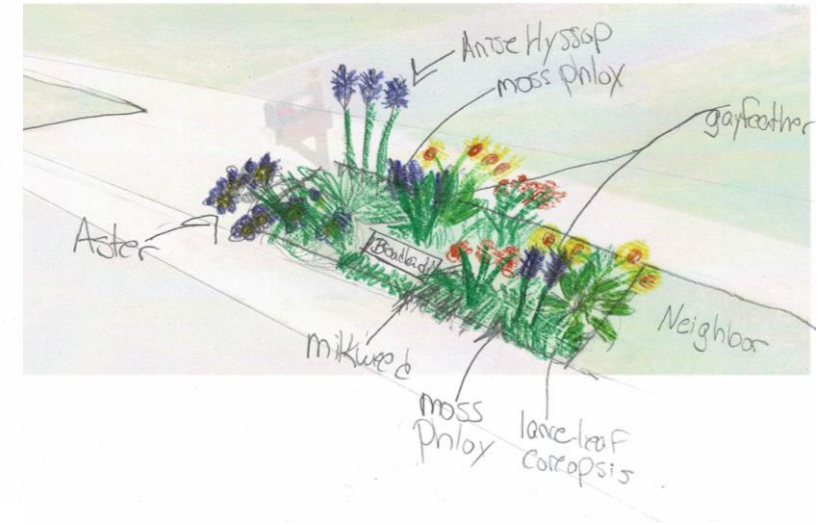


TURFGRASS MAINTENANCE

A photograph of a garden at night. In the foreground, there is a dense bed of yellow flowers, likely Black-eyed Susans, with green foliage. In the background, a group of people, including a man in a blue shirt and shorts, a woman in a blue dress, and a child in a blue shirt, are gathered around a small wooden table. A dog is also visible. To the right, a person in a black and red Spider-Man shirt and black pants stands on a sidewalk. The scene is illuminated by warm lights, possibly from a house or street lamps. A dark green semi-transparent box is overlaid on the left side of the image, containing the text "A LITTLE TOO MUCH!".

A LITTLE
TOO
MUCH!

APPLY FOR YOUR GARDEN

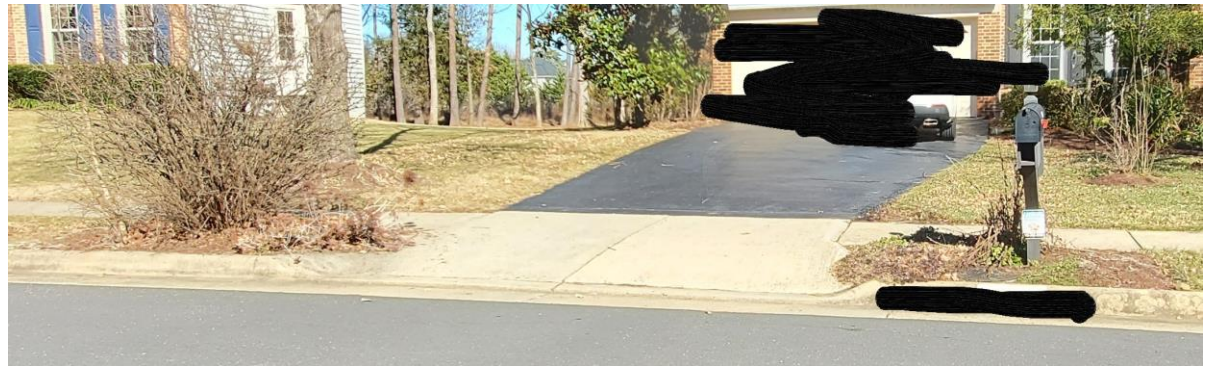


Goals:

- To reduce lawn and mulched areas
- Eliminate herbicides, fertilizer and pesticides
- Add native plants to feed local wildlife and pollinators
- Decrease water run-off
- Repair depleted soil
- Provide flowers in bloom throughout the growing season
- Obtain and maintain certifications from Audubon Society, National Wildlife Federation, Xerces Society, Monarch Waystation and more



OTHER HOUSES





...over 200 Other Houses



“EDUCATE THE BOARD”



Low-impact landscaping

- Reduce Pollution
- Create Habitat for Wildlife
- Conserve Water
- Lower Maintenance Costs

TURFGRASS
OR BUST



Asclepias Purpurascens

State imperiled plant

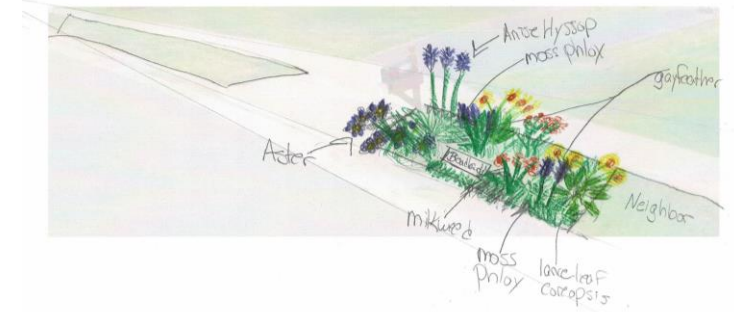
DCR-VA Rare Plants

TURFGRASS
OR BUST

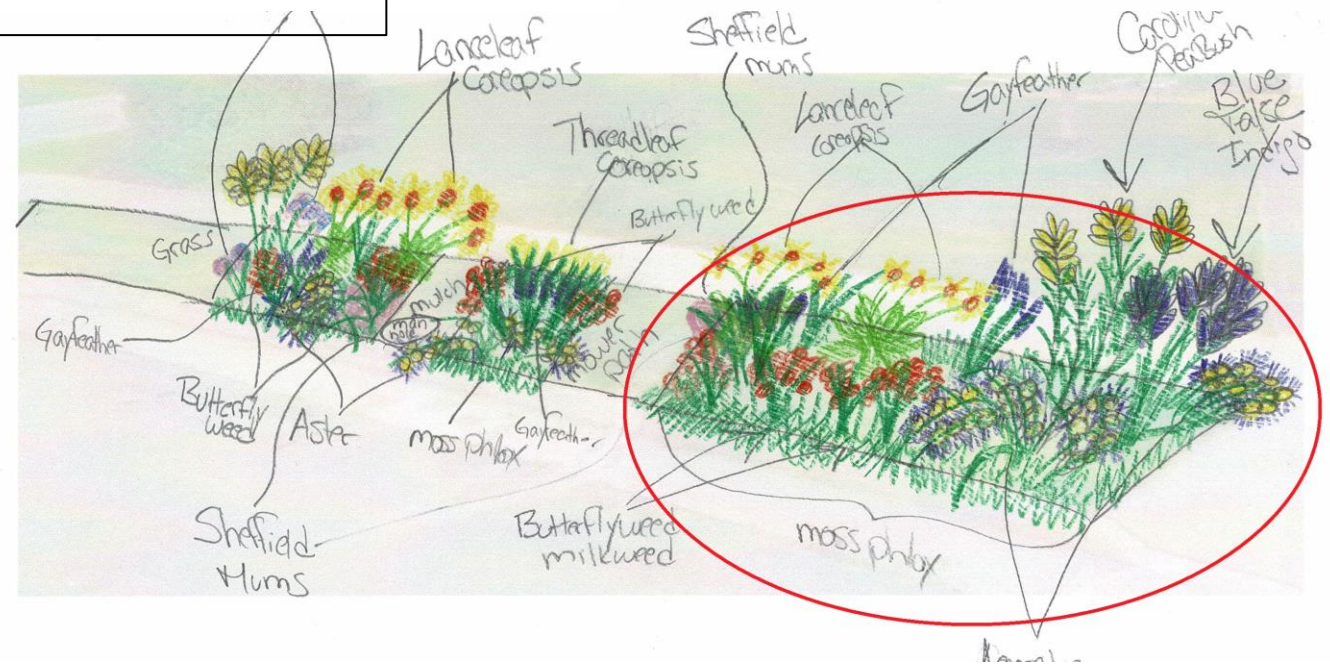


Here are my suggestions for compromise:

- Maintain pollinator garden to left and right of driveway of 4 feet
- Remove most of strip in front of house
 - Use lower growing species generally to remain at a height of 4" or less
 - A small number of herbaceous perennials not to exceed 2' in height



PROPOSED COMPROMISE





2023

Partial Success!

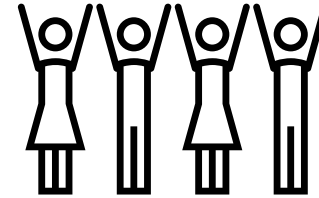
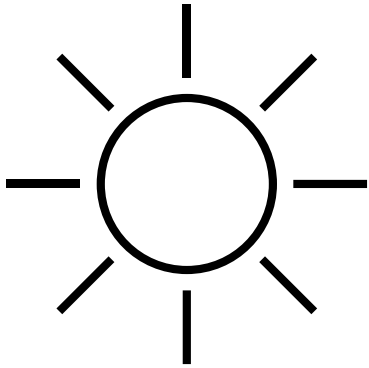
“You never offered to make changes to your plantings.”

“Nothing you can say or show us will change our mind.”



PLEASE GROW!

LEGISLATION WORKS!



§ 55.1-1951.1. Installation of solar energy collection devices.



"We wanted to install solar panels on the front of our home.... But ran into a brick wall with the board"

ALTERNATE
SCENARIO:
SUCCESSFUL
LEGISLATION!



CURRENT RULE



“Plantings must not restrict vehicular sight lines along roadways, pipe-stems, or driveways.”



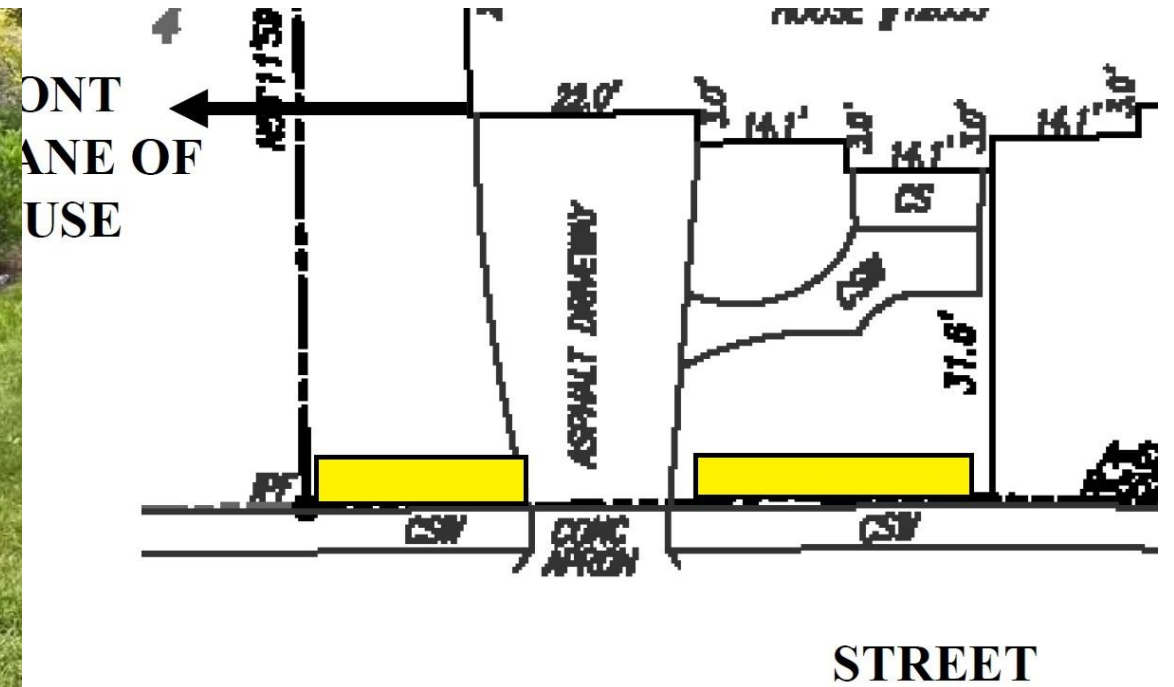
EXAMPLE:

- “Plantings must not restrict vehicular sight lines or encroach along roadways, sidewalks, pipe-stems, or driveways.”

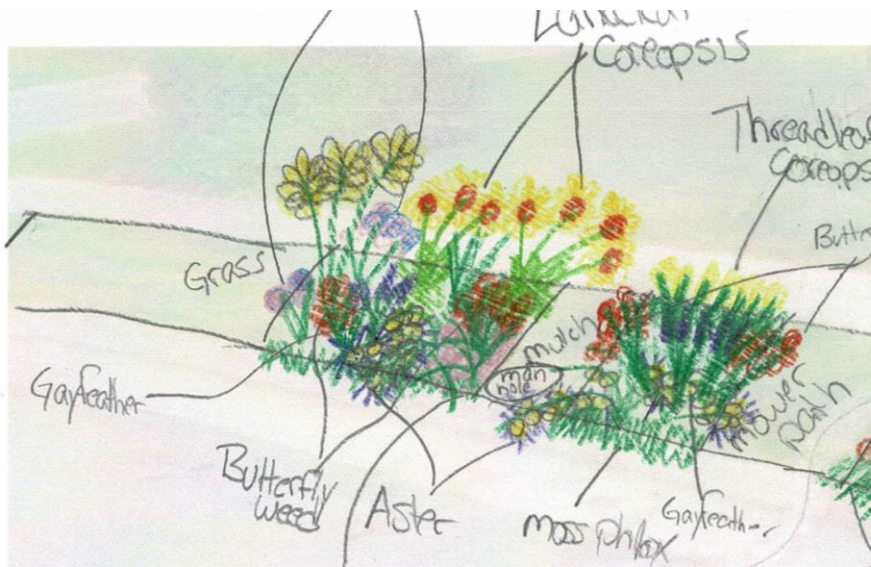


STANDARDS & REGULATIONS



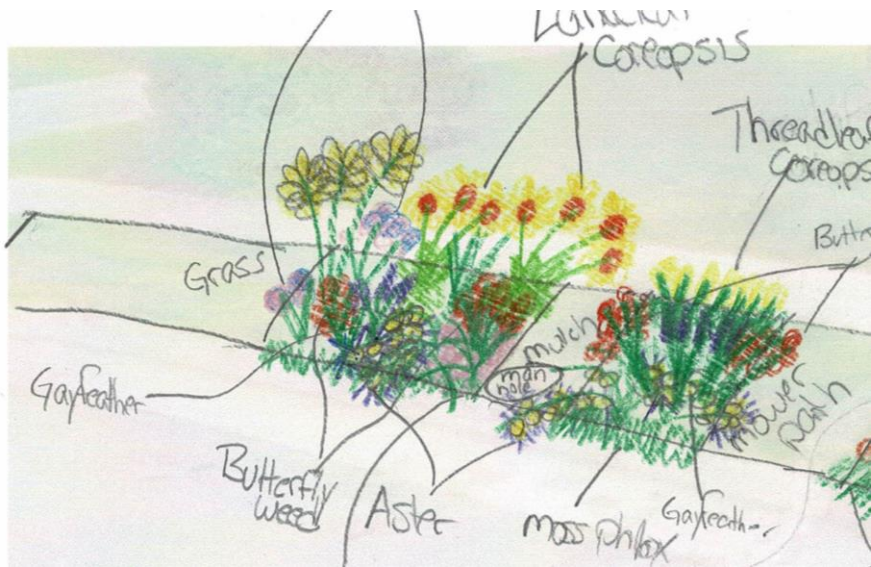


REASONABLE RESTRICTIONS



Plant Name	Common Name	Bloom Time	Bloom Color	Height
Agastache Foeniculum	Anise Hyssop	summer to fall	purple	5 ft
Amonia tabernaemontana	Willow Leaf Bluestar	spring	purple	2 ft
Asclepia Tuberosa	Butterfly Weed	summer	orange	3 ft
Asclepias Purpurea	Purple Milkweed	summer	purple	2 ft
Asclepias Verticillata	Whorled Milkweed	summer	white	2 ft
Baptisia Australis	False Blue Indigo	spring	purple	4 ft
Ceanothus americanus	New Jersey Tea	summer	white	2 ft
Chrysanthemum	Sheffield Pink	fall	pink/yellow	2 ft
Coreopsis Lanceolata	Lanceleaf Coreopsis	Early summer	orange	1 ft
Coreopsis Verticillata	Threadleaf Tickseed	Summer	yellow	1 ft

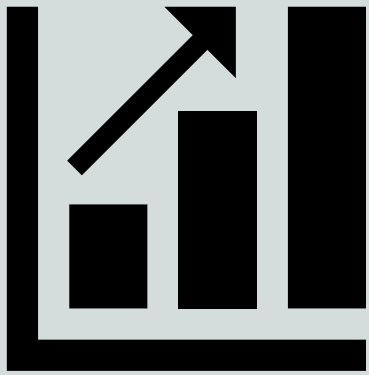
PEOPLE AND POLLINATOR FRIENDLY



Plant Name	Common Name	Bloom Time	Bloom Color	Height
Agastache Foeniculum	Anise Hyssop	summer to fall	purple	5 ft
Amonia tabernaemontana	Willow Leaf Bluestar	spring	purple	2 ft
Asclepias Tuberosa	Butterfly Weed	summer	orange	3 ft
Asclepias Purpurea	Purple Milkweed	summer	purple	2 ft
Asclepias Verticillata	Whorled Milkweed	summer	white	2 ft
Baptisia Australis	False Blue Indigo	spring	purple	4 ft
Ceanothus americanus	New Jersey Tea	summer	white	2 ft
Chrysanthemum	Sheffield Pink	fall	pink/yellow	2 ft
Coreopsis Lanceolata	Lanceleaf Coreopsis	Early summer	orange	1 ft
Coreopsis Verticillata	Threadleaf Tickseed	Summer	yellow	1 ft

PEOPLE AND POLLINATOR FRIENDLY

CURB APPEAL



May 2018



May 2019

Photo credit to Monarch Gardens, LLC



CONVERSATION,
COMPROMISE,
CONSERVATION



Photo credit to u/invaderzimm95



VIRGINIA
SUPPORTS
POLLINATORS